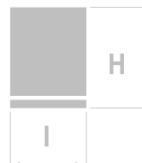




TIGER-250YC-DIESEL-TRI-Série 2-Euro 2-



Dimensions :

L : 4 200 mm

I : 1 500 mm

H : 2 200 mm

Weight : 3 700 kg
PRODUCT CODE : PRO11638

1 - GENERAL DATAS

GENERAL DATAS

PRP Prime Running Power	225 kVA/180 kW
ESP Emergency Standby Power	247 kVA/197,6 kW
Voltage	230 400V
Power factor (cosΦ)	0,8
Rotation speed	1 500rpm

Fréquence	50Hz
Number of phases	3
Acoustic pressure level at 7m	73dB(A)
Fuel tank autonomy at 75%	10 h
Fuel tank capacity	320 L

ENGINE

Model	YC6MK285L-D20
Number of cylinders	6
Governor type	Electronic
Specifications	4 stroke cycle engine, direct fuel injection , liquid-based cooling
Displacement	9,84 L
Maximum standby power at 1500 tr/min	235 kW
Engine starting type	Electrical 24 V
Fuel consumption at 75%	30,99 L/h
Air inlet system	Turbo-charged & intercooler
Oil capacity	25 L
Radiator engine capacity	55,7 L

ALTERNATOR GELEC

Amperage	326 A
Technology	Brushless, With Electronic Regulation
AVR	STAMFORD
Voltage regulation type	Electronic
IP Protection	23
Insulation class	H

CIRCUIT BREAKER

Type	Four poles thermal magnetic circuit breaker with adjustable differential switches
------	---

DEESEA CONTROLLER



Model	DSE6020MKII
Applications	Automatic start / stop of generators , power losses detection, scheduler

SET SCREW



LIFTING :



By forks or straps
Accessories not included

2 - AVAILABLE OPTIONS

1 - PLUGS SETS


Plugs sets integrated without flood (no projections) equipped with a circuit breaker for every single plugs, a differential switch and a stainless steel bulkheads.


Choice of :

- 1st Type : 3-phase plug 16A single phase 16A taken
- 2nd Type : Taken 32A + 16A three-phase 3-phase 16A taken
- 3rd Type : Taken 63A + 32A + 16A three-phase 3-phase 16A taken
- 4th Type : Powerlock



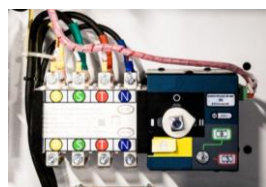
2 - TANK

PEHD TANK	DESCRIPTION	DIMENSIONS/CAPACITY
	aerial tank (tank applied for interior) Double skin, high density polyethylene (HDPE) containment tank completely sealed and stable.	750L : 1200x660x1685 mm - 46kg 1000L : 1420x660x1885 mm - 59kg 1500L : 1720x770x1920 mm - 90kg 2000L : 2200x770x1800 mm - 145kg

GALVANIZED STEEL TANK	DESCRIPTION	DIMENSIONS/CAPACITY
	Metallic tank (usually used for trailers) Double skin, integrated containment tank, HDPE inner pouch, galvanized steel outer shell.	700L : 1135x757x1210 mm - 65kg

According to the distance between the genset and the tank, a fuel transfer pump can be necessary.

3 - INTEGRATED SOURCE INVERTER



This system permit the automatic start of the genset in case of power failure.

Assembly comprising the board, the switch and the connection terminal board.

4 - OFFSET SOURCE INVERTER IN BOX

The offset source inverter in box is an option just from 9 to 180 kVA and standard from 200 kVA.